



MEDICAL GAS OUTLETS CONSUMPTION TABLES



INSTALLATION

Our goal is not only to supply the best product, but also to install it correctly and in compliance with all applicable standards. By combining these two services, we can provide the client with the best quality warranty for a product that fully meets high esthetic and functional expectations.



ADVICE

Our consultants advise our clients on minor and major issues every day. They suggest which product to choose, which thread fits the dispenser, and how to connect the bed head unit to the systems. We answer every question related to our business, even when we are not involved in a project.



NEEDS ANALYSIS

During a needs analysis, we examine what is necessary for proper functioning of medical gas systems in a hospital. We check for problems that prevent you from achieving what you need, and we identify possible solutions.



DESIGNING

Our many years of experience allow us to prepare building and detailed designs along with solutions that have a real impact on the efficiency and quality of medical gas systems in hospitals.



WARRANTY

All our products and services come with a 2-year warranty. When buying a product together with the service, the client is always sure of professional warranty service.



MAINTENANCE

In order to enable hospitals to enjoy the convenience that comes with our products, we provide maintenance services. By performing periodic inspections, we ensure that the properties and quality of our products will not change with time.



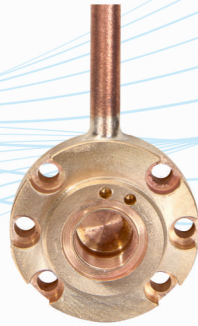
CERTIFICATION

We test and certify gas systems for compliance with applicable standards, including those concerning tightness, mechanical strength, cross connections, and system efficiency. As a result, hospitals can be sure that they buy high quality products.

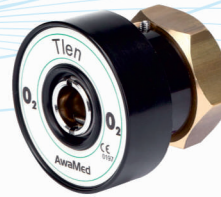
AGA, DIN OUTLETS

FUNCTIONS

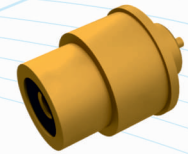
- › The collection of medical gases and vacuum when connected to the pipeline system.
- › Quick and trouble-free connection and disconnection of the gas and vacuum supply systems.
- › Prevents particulate matter from entering the gas collection equipment and central vacuum system.



valve socket



valve with push rod



complete outlet valve



AGA OUTLETS	INDEKS
AGA outlets [O ₂]	PPAK 01 00 00
Valve with push rod	PPAK 10 01 00
Valve socket	PPZAK 01 01 00
AGA outlets [SP]	PPAK 02 00 00
Valve with push rod	PPAK 10 02 00
Valve socket	PPZAK 01 02 00
AGA outlets [VAC]	PPAK 03 00 00
Valve with push rod	PPAK 10 03 00
Valve socket	PPZAK 01 03 00
AGA outlets [N ₂ O]	PPAK 04 00 00
Valve with push rod	PPAK 10 04 00
Valve socket	PPZAK 01 04 00
AGA outlets [CO ₂]	PPAK 05 00 00
Valve with push rod	PPAK 10 05 00
Valve socket	PPZAK 01 05 00
Complete outlet valve AGA (O ₂ , SP, N ₂ O, CO ₂)	PPAK 01 01 01
Complete outlet valve AGA (VAC)	PPAK 01 01 01 P

DIN OUTLETS	INDEKS
DIN outlets [O ₂]	PPD 01 00 00
Valve with push rod	PPD 10 01 00
Valve socket	PPZAK 01 01 00
DIN outlets [SP]	PPD 02 00 00
Valve with push rod	PPD 10 02 00
Valve socket	PPZAK 01 02 00
DIN outlets [VAC]	PPD 03 00 00
Valve with push rod	PPD 10 03 00
Valve socket	PPZAK 01 03 00
DIN outlets [N ₂ O]	PPD 04 00 00
Valve with push rod	PPD 10 04 00
Valve socket	PPZAK 01 04 00
DIN outlets [CO ₂]	PPD 05 00 00
Valve with push rod	PPD 10 05 00
Valve socket	PPZAK 01 05 00
Complete outlet valve AGA DIN (O ₂ , SP, N ₂ O, CO ₂)	PPD 01 01 05
Complete outlet valve AGA (VAC)	PPD 01 01 01 P

CONSUMPTION TABLES

The AGA, DIN outlets are also produced in surface and flush-mounted panels depending on your needs or the installation capabilities of the hospital facility. The points configuration, their type and quantity depend on the needs of the customer who in 3 steps, determines:

1 ENCLOSURE TYPE:

- › Flush-mounted outlet panel (TP)
- › Surface-mounted outlet panel (TN)

2 OUTLET TYPE:

- › DIN (D)
- › AGA (A)

3 THE QUANTITY AND TYPE OF MEDICAL GASES

- › Oxygen (O)
- › Nitrous oxide (N)
- › Compressed air (A)
- › AIR MOTOR outlet (M)
- › Vacuum (V)
- › Carbon dioxide (C)
- › AGSS DIN II extractor (G2)

SURFACE-MOUNTED OUTLET PANELS

examples of solutions



FLUSH-MOUNTED OUTLET PANELS

examples of solutions



AIR MOTOR OUTLETS

FEATURES:

- ▶ Powered surgical pneumatic tools.
- ▶ Quick and trouble-free connection and disconnection of the power systems.

TECHNICAL SPECIFICATION:

- ▶ Air-motor supply pressure for air to drive surgical tools with suction: min. 8 bar.



AIR-MOTOR plug



AIR-MOTOR outlet

NAME	INDEKS
Pneumatic surgical tools power outlet	GAM 01 01 00
Pneumatic surgical tool power plug	AMO 01 01 00

POST-ANAESTHETIC GAS EXTRACTOR

FUNCTIONS:

- ▶ Suction of the post-anaesthetic gases outside the waste air line.

TECHNICAL SPECIFICATIONS:

- ▶ Supply pipes:
 - Compressed gas pipe: Cu 8x1 pipe,
 - Waste air pipe: Cu 15x1 pipe.
- ▶ Outlet:
 - Compressed air supply system:
 - Injector: 4 mm PA hose connector or 6 mm hose end,
 - Ejector: 4 mm PA hose connector or 6 mm hose end.
- ▶ Anaesthetic gas discharge:
 - Spiral hose 15 mm.
- ▶ Visual signal:
 - Adapter for 4 mm PA hose.
- ▶ Performance:
 - Approx. 50 l/min with 500 kPa compressed gas.
- ▶ Gas consumption:
 - approx. 12 l/min with suction capacity of 50 l/min.



Gas extractor DIN I



Gas extractor DIN II

NAME	INDEKS
Outlet of the DIN I anaesthetic gas extraction outlet	GOGD 01 01 00
Outlet of the DIN II anaesthetic gas extraction outlet	GOGD 01 02 00

NIST TYPE FITTING CONNECTOR



NIST 1/4" thread end receptacle

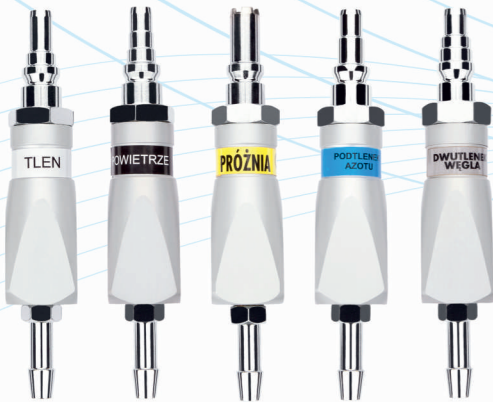


NIST complete plug with hose connector

NAZWA	INDEKS
NIST 1/4" thread end receptacle 1/4" O ₂	PPN 02 11 00
NIST 1/4" thread end receptacle 1/4" SP	PPN 02 12 00
NIST 1/4" thread end receptacle 1/4" N ₂ O	PPN 02 14 00
NIST 1/4" thread end receptacle 1/4" CO ₂	PPN 02 15 00

NAZWA	INDEKS
NIST O ₂ complete plug with hose connector	WPN 01 01 01
NIST SP complete plug with hose connector	WPN 01 02 01
NIST N ₂ O complete plug with hose connector	WPN 01 04 01
NIST CO ₂ complete plug with hose connector	WPN 01 05 01

AGA PLUGS WITH BUSHING



NAME	ANGLED	STRAIGHT
AGA O ₂ plug [oxygen]	WKA 01 01 00	WPA 01 01 00
AGA SP plug [compressed air]	WKA 01 02 00	WPA 01 02 00
AGA VAC plug [vacuum]	WKA 01 03 00	WPA 01 03 00
AGA N ₂ O plug [nitrous oxide]	WKA 01 04 00	WPA 01 04 00
AGA CO ₂ plug [carbon dioxide]	WKA 01 05 00	WPA 01 05 00



AGA SELF-LOCKING PLUGS



NAME	ANGLED	STRAIGHT
AGA O ₂ plug [oxygen]	WKA 01 01 02	WPA 01 01 02
AGA SP plug [compressed air]	WKA 01 02 02	WPA 01 02 02
AGA VAC plug [vacuum]	WKA 01 03 02	WPA 01 03 02
AGA N ₂ O plug [nitrous oxide]	WKA 01 04 02	WPA 01 04 02
AGA CO ₂ plug [carbon dioxide]	WKA 01 05 02	WPA 01 05 02



DIN PLUGS WITH BUSHING



NAME	ANGLED	STRAIGHT
DIN O ₂ plug [oxygen]	WKD 01 01 00	WPD 01 01 00
DIN SP plug [compressed air]	WKD 01 02 00	WPD 01 02 00
DIN VAC plug [vacuum]	WKD 01 03 00	WPD 01 03 00
DIN N ₂ O plug [nitrous oxide]	WKD 01 04 00	WPD 01 04 00
DIN CO ₂ plug [carbon dioxide]	WKD 01 05 00	WPD 01 05 00



DIN SELF-LOCKING PLUGS



NAME	ANGLED	STRAIGHT
DIN O ₂ plug [oxygen]	WKD 01 01 01	WPD 01 01 01
DIN SP plug [compressed air]	WKD 01 02 01	WPD 01 02 01
DIN VAC plug [vacuum]	WKD 01 03 01	WPD 01 03 01
DIN N ₂ O plug [nitrous oxide]	WKD 01 04 01	WPD 01 04 01
DIN CO ₂ plug [carbon dioxide]	WKD 01 04 02	WPD 01 05 01



AGA GAS FITTINGS

AGA 1/4" THREAD GAS FITTINGS	INDEKS
AGA gas fitting with SP external thread O ₂	SZA 01 01 00
AGA gas fitting with SP external thread SP	SZA 01 02 00
AGA gas fitting with SP external thread VAC	SZA 01 03 00
AGA gas fitting with SP external thread N ₂ O	SZA 01 04 00

AGA 1/4" THREAD GAS FITTINGS	INDEKS
AGA gas fitting with SP internal thread O ₂	SZA 01 11 00
AGA gas fitting with SP internal thread SP	SZA 01 12 00
AGA gas fitting with SP internal thread VAC	SZA 01 13 00
AGA gas fitting with SP internal thread N ₂ O	SZA 01 14 00

AGA GAS FITTINGS WITH BUSHING	INDEKS
AGA gas fitting with O ₂ bushing	SZAT 01 01 00
AGA gas fitting with SP bushing	SZAT 01 02 00
AGA gas fitting with VAC bushing	SZAT 01 03 00
AGA gas fitting with N ₂ O bushing	SZAT 01 04 00



AGA gas fitting with SP internal thread



AGA gas fitting with bushing

DIN GAS FITTINGS

DIN 1/4" THREAD GAS FITTINGS	INDEKS
DIN gas fitting with SP external thread O ₂	SZD 01 01 00
DIN gas fitting with SP external thread SP	SZD 01 02 00
DIN gas fitting with SP external thread VAC	SZD 01 03 00
DIN gas fitting with SP external thread N ₂ O	SZD 01 04 00

DIN 1/4" THREAD GAS FITTINGS	INDEKS
DIN gas fitting with SP internal thread O ₂	SZD 01 11 00
DIN gas fitting with SP internal thread SP	SZD 01 12 00
DIN gas fitting with SP internal thread VAC	SZD 01 13 00
DIN gas fitting with SP internal thread N ₂ O	SZD 01 14 00

DIN GAS FITTINGS WITH BUSHING	INDEKS
DIN gas fitting with O ₂ bushing	SZDT 01 01 00
DIN gas fitting with SP bushing	SZDT 01 02 00
DIN gas fitting with VAC bushing	SZDT 01 03 00
DIN gas fitting with N ₂ O bushing	SZDT 01 04 00



DIN gas fitting with SP internal thread



DIN gas fitting with bushing

AGA QUICK COUPLER ADAPTER



Adapter DIN plug gas fitting AGA

AGA GAS FITTINGS	INDEKS
Adapter DIN plug gas fitting AGA [O ₂]	ADA 01 01 00
Adapter DIN plug gas fitting AGA [SP]	ADA 01 02 00
Adapter DIN plug gas fitting AGA [VAC]	ADA 01 03 00
Adapter DIN plug gas fitting AGA [N ₂ O]	ADA 01 04 00

DIN QUICK COUPLER ADAPTER



Adapter AGA plug gas fitting DIN

DIN GAS FITTINGS	INDEKS
Adapter AGA plug gas fitting DIN [O ₂]	AAD 01 01 00
Adapter AGA plug gas fitting DIN [SP]	AAD 01 02 00
Adapter AGA plug gas fitting DIN [VAC]	AAD 01 03 00
Adapter AGA plug gas fitting DIN [N ₂ O]	AAD 01 04 00
Adapter AGA plug gas fitting DIN [CO ₂]	AAD 01 05 00

MANIFOLDS

MANIFOLDS	AGA	DIN
O ₂ manifold U version	ROA 01 01 00 U	ROD 01 01 00 U
O ₂ manifold Y version	ROA 01 01 00 Y	ROD 01 01 00 Y
SP manifold U version	ROA 01 02 00 U	ROD 01 02 00 U
SP manifold Y version	ROA 01 02 00 Y	ROD 01 02 00 Y
VAC manifold U version	ROA 01 03 00 U	ROD 01 03 00 U
VAC manifold Y version	ROA 01 03 00 Y	ROD 01 03 00 Y
N ₂ O manifold U version	ROA 01 04 00 U	ROD 01 04 00 U
N ₂ O manifold Y version	ROA 01 04 00 Y	ROD 01 04 00 Y
CO ₂ manifold U version	ROA 01 05 00 U	ROD 01 05 00 U
CO ₂ manifold Y version	ROA 01 05 00 Y	ROD 01 05 00 Y



Y-type manifold



U-type manifold

MEDICAL RAIL SLOT DIVIDERS

The outlet port dividers allow you to increase the number of outlets in the room or move them without having to interfere with your existing installation. DIN rail mounting with handles. The configuration of the points of entry, i.e. the type and quantity and the output of the wires, shall be determined by the customer as follows:

- 1 THE TYPE OF OUTLET**
 - › DIN (D)
 - › AGA (A)
- 2 THE WIRING OUTLET**
 - › Right side (P)
 - › Left side (L)
- 3 QUANTITY AND TYPE OF MEDICAL GASES:**
 - › Oxygen (O)
 - › Nitrous oxide (N)
 - › Compressed air (A)
 - › Vacuum (V)
 - › Carbon dioxide (C)



SAMPLE DIVIDER INDEXES:

- TRAP OOVV** - Instrument panel for gas consumption, DIN rail, right, for four points in AGA system [OXYGEN, OXYGEN, VACUUM, VACUUM]
- TRAL OOVV** - Instrument panel for gas consumption, DIN rail, left, for four points in AGA system [OXYGEN, OXYGEN, VACUUM, VACUUM]
- TRDP OOVV** - Instrument panel for gas consumption, DIN rail, right, for four points in DIN system [OXYGEN, OXYGEN, VACUUM, VACUUM]
- TRDL OOVV** - Instrument panel for gas consumption, DIN rail, left, for four points in DIN system [OXYGEN, OXYGEN, VACUUM, VACUUM]

AIR - MOTOR PLUG



AIR-MOTOR power plug for pneumatic tools

NAME	INDEKS
AIR-MOTOR plug	AMO 01 01 00

AGSS PLUGS



AGSS DIN 1 plug



AGSS DIN 2 plug
(straight)



AGSS DIN 2 plug
(angled)

NAME	INDEKS
AGSS DIN I Anaesthetic gas suction plug	OGD 01 01 00
AGSS DIN II Anaesthetic gas suction plug	OGD 02 01 00
AGSS DIN II Anaesthetic gas suction angled plug	OGD 02 01 01

1/4" THREAD EXTENSION CABLES



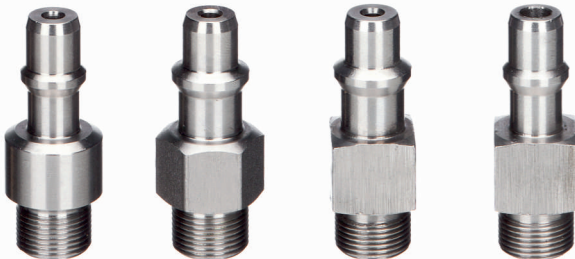
NAME	INDEKS
Short extension cable for DIN/AGA [20 mm]	WDP 01 01 02
Long extension cable for DIN/AGA [20 mm]	WDP 01 02 01

AGA 1/4" THREAD PLUGS



NAME	INDEKS
AGA threaded plug (O ₂)	WGA 01 01 02
AGA threaded plug (SP)	WGA 01 02 01
AGA threaded plug (VAC)	WGA 01 03 01
AGA threaded plug (N ₂ O)	WGA 01 04 02
AGA threaded plug (CO ₂)	WGA 01 05 02

SHORT DIN PLUGS WITH 1/4" THREAD



NAME	INDEKS
DIN threaded plug (O ₂)	WGD 01 01 02
DIN threaded plug (SP)	WGD 01 02 01
DIN threaded plug (VAC)	WGD 01 03 01
DIN threaded plug (N ₂ O)	WGD 01 04 01
DIN threaded plug (CO ₂)	WGD 01 05 01

LONG AGA, DIN PLUGS WITH 1/4" THREAD



NAME	INDEKS
Long AGA plug with 1/4" thread (O ₂)	WDG 01 01 00
Long AGA plug with 1/4" thread (SP)	WDG 01 02 00
Long AGA plug with 1/4" thread (VAC)	WDG 01 03 00
Long AGA plug with 1/4" thread (N ₂ O)	WDG 01 04 00
Long DIN plug with 1/4" thread (O ₂)	WDG 01 01 04
Long AGA plug with 1/4" thread (SP)	WDG 01 02 04

WE ALSO PRODUCE

- MEDICAL CEILING SUPPLY PENDANTS
- MEDICAL CEILING SUPPLY BEAMS
- MEDICAL BED HEAD UNITS
- AREA VALVE SERVICE UNIT (AVSU)
- FLOWMETERS
- MEDICAL SUCTIONS
- GAS OUTLETS
- PLUGS
- ADAPTERS
- GAS FITTINGS
- MANIFOLDS



© AwaMed - Medizintechnik
second edition

20 YEARS
of experience

200
products

AwaMed - Medizintechnik Arkadiusz Warzyński
ul. Zeusa 1 • 72-006 Mierzyn • www.awamed.pl

 awamed@awamed.pl  tel. +48 91 48 76 849

